

www.gsmotion.com

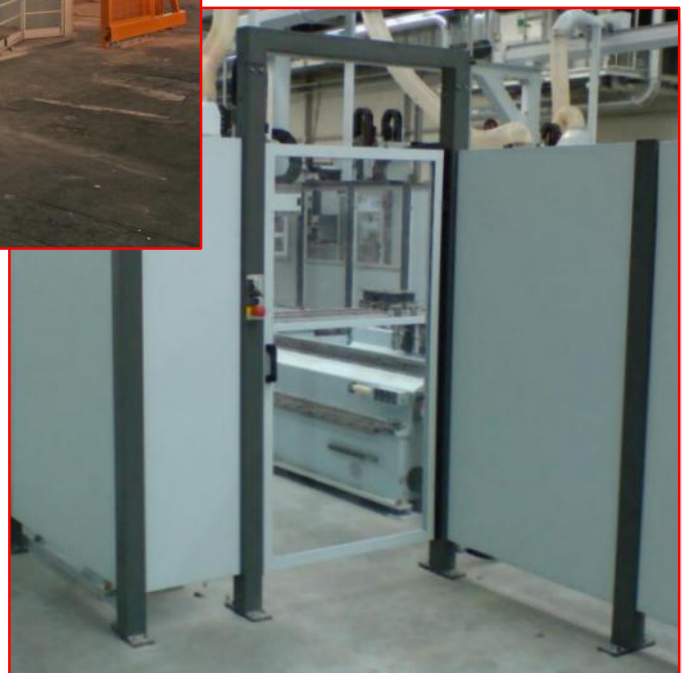
GSM Inc.



Guarding

Safety

Motion



In a class of its own:

Easy To Design Easy To Install

Take the safe route. The incredibly solid and wear resistant safety fence system guarantees the highest level of quality, longevity, and safety. Furthermore it is one of the most affordable systems on the market. It becomes apparent when looking at the initial purchase, the performance in the manufacturing environment, the maintenance, and during the easy installation.

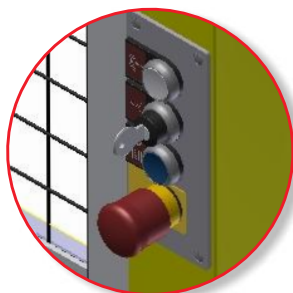
Since all the fence elements are completely welded and pre-assembled when they arrive at your facility, the installation on site can be accomplished within hours not days! **And here is the best feature:** Because of the innovative mounting system you can install this system without the use of tools.



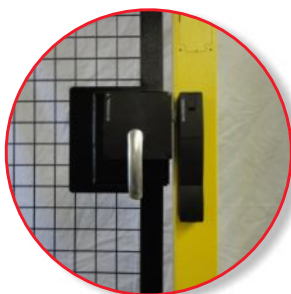
Quick connect assembly system will reduce labor. The uncommon assembly tool complies with ISO 12100-2



Quick connect assembly system with adjustable angle fittings



Available with Integrated safety control built into the door frame



Premier safety interlock door handles



Foot pads with jack screws for easy post leveling

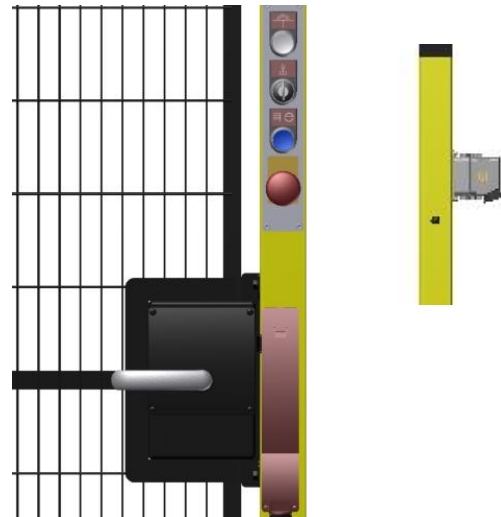


Follows the ISO 12100-2 and the NEW RIA 15.06.2012 Regulations



CE Compliant

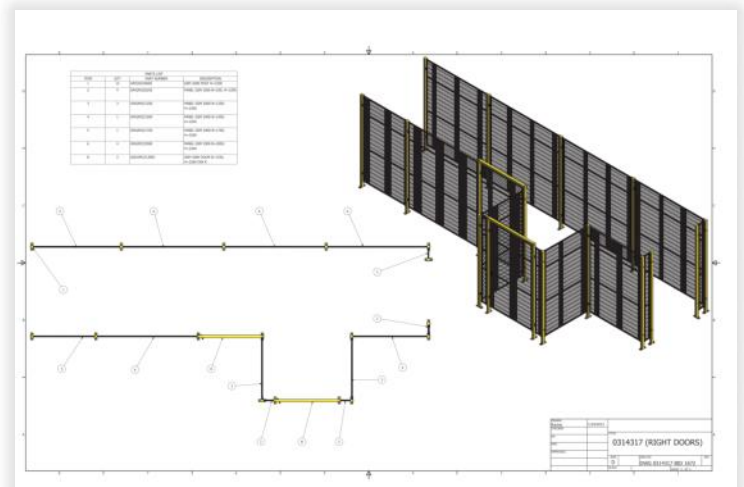
Plug In And Go: Designed to save you time and money, GSM doors are available with a Pre- Wired Integrated Safety Control Pendant and a Schmersal AZM 200 Integrated Interlock Handle.



Easy to design: 3D models are available to reduce your design time.

GSM also provides the following services:

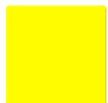
- 3D Design
- Part Labeling To Drawing
- On-Site Installation



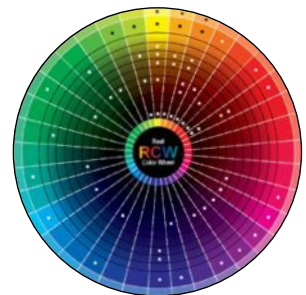
Durable Finish: Offering only the best, GSM's product comes standard with a powder coat finish to ensure longevity in the harshest environments.



Standard Panel Color RAL # 9005
Jet Black



Standard Post Color RAL # 1018
Zinc Yellow



Other Powder Coat Colors Available
per request. Check RAL #

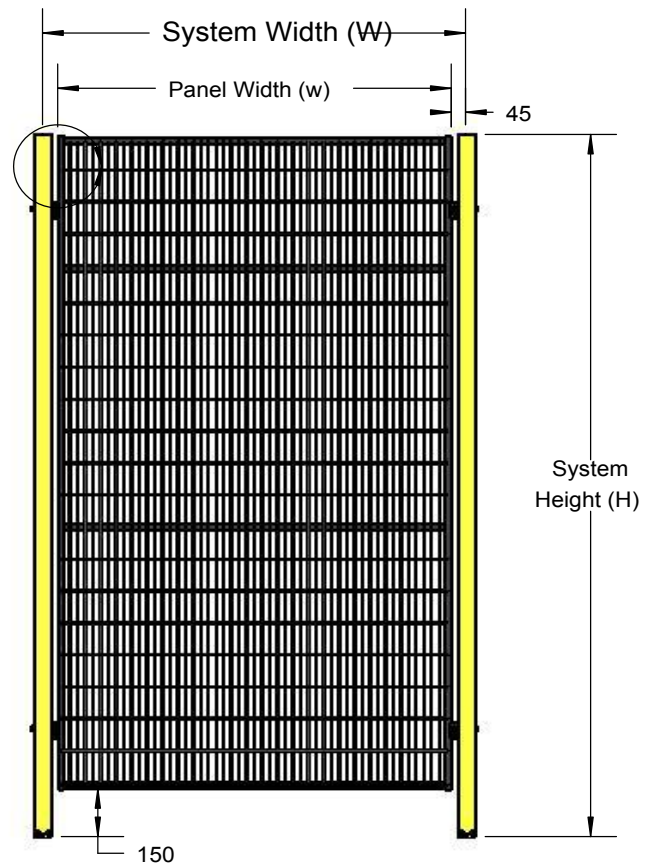
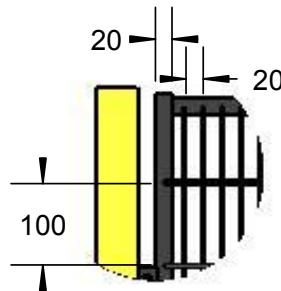
Packaged Right: GSM takes the time and care to insure it arrives at your facility the way it left ours.



GSM 2000 Series

GSM's 2000 series guarding is a solid and safe system, but also a cost effective solution. The panel frames are an all welded tubular design with multiple middle supports which doesn't allow the frame to flex like traditional angle iron system. The welded wire mesh is a 2mm diameter wire that is welded at all junctions. Posts are a 50mm square tube with a choice between a two or four anchor bolt foot pad. All foot pads have four threaded holes for leveling screws which are provided by GSM.

The panels and posts come with the quick assembly fittings pre-attached.



Height [mm] Width [mm]	1200 (H)	1400 (H)	1600 (H)	1800 (H)	2200 (H)	2700 (H)	3650 (H)	4250 (H)
250 (W) System width	160 (w) x 1050 (h) GPA2M120250	160 (w) x 1250 (h) GPA2M140250	160 (w) x 1450 (h) GPA2M160250	160 (w) x 1650 (h) GPA2M180250	160 (w) x 2050 (h) GPA2M220250	160 (w) x 2550 (h) GPA2M270250	Call out for two 1800mm Panels	Call out for two 2200mm Panels
300 (W) System width	210 (w) x 1050 (h) GPA2M120300	210 (w) x 1250 (h) GPA2M140300	210 (w) x 1450 (h) GPA2M160300	210 (w) x 1650 (h) GPA2M180300	210 (w) x 2050 (h) GPA2M220300	210 (w) x 2550 (h) GPA2M270300	Call out for two 1800mm Panels	Call out for two 2200mm Panels
400 (W) System width	310 (w) x 1050 (h) GPA2M120400	310 (w) x 1250 (h) GPA2M140400	310 (w) x 1450 (h) GPA2M160400	310 (w) x 1650 (h) GPA2M180400	310 (w) x 2050 (h) GPA2M220400	310 (w) x 2550 (h) GPA2M270400	Call out for two 1800mm Panels	Call out for two 2200mm Panels
500 (W) System width	410 (w) x 1050 (h) GPA2M120500	410 (w) x 1250 (h) GPA2M140500	410 (w) x 1450 (h) GPA2M160500	410 (w) x 1650 (h) GPA2M180500	410 (w) x 2050 (h) GPA2M220500	410 (w) x 2550 (h) GPA2M270500	Call out for two 1800mm Panels	Call out for two 2200mm Panels
600 (W) System width	510 (w) x 1050 (h) GPA2M120600	510 (w) x 1250 (h) GPA2M140600	510 (w) x 1450 (h) GPA2M160600	510 (w) x 1650 (h) GPA2M180600	510 (w) x 2050 (h) GPA2M220600	510 (w) x 2550 (h) GPA2M270600	Call out for two 1800mm Panels	Call out for two 2200mm Panels
700 (W) System width	610 (w) x 1050 (h) GPA2M120700	610 (w) x 1250 (h) GPA2M140700	610 (w) x 1450 (h) GPA2M160700	610 (w) x 1650 (h) GPA2M180700	610 (w) x 2050 (h) GPA2M220700	610 (w) x 2550 (h) GPA2M270700	Call out for two 1800mm Panels	Call out for two 2200mm Panels
750 (W) System width	660 (w) x 1050 (h) GPA2M120750	660 (w) x 1250 (h) GPA2M140750	660 (w) x 1450 (h) GPA2M160750	660 (w) x 1650 (h) GPA2M180750	660 (w) x 2050 (h) GPA2M220750	660 (w) x 2550 (h) GPA2M270750	Call out for two 1800mm Panels	Call out for two 2200mm Panels
800 (W) System width	710 (w) x 1050 (h) GPA2M120800	710 (w) x 1250 (h) GPA2M140800	710 (w) x 1450 (h) GPA2M160800	710 (w) x 1650 (h) GPA2M180800	710 (w) x 2050 (h) GPA2M220800	710 (w) x 2550 (h) GPA2M270800	Call out for two 1800mm Panels	Call out for two 2200mm Panels
900 (W) System width	810 (w) x 1050 (h) GPA2M120900	810 (w) x 1250 (h) GPA2M140900	810 (w) x 1450 (h) GPA2M160900	810 (w) x 1650 (h) GPA2M180900	810 (w) x 2050 (h) GPA2M220900	810 (w) x 2550 (h) GPA2M270900	Call out for two 1800mm Panels	Call out for two 2200mm Panels
1000 (W) System width	910 (w) x 1050 (h) GPA2M121000	910 (w) x 1250 (h) GPA2M141000	910 (w) x 1450 (h) GPA2M161000	910 (w) x 1650 (h) GPA2M181000	910 (w) x 2050 (h) GPA2M221000	910 (w) x 2550 (h) GPA2M271000	Call out for two 1800mm Panels	Call out for two 2200mm Panels
1250 (W) System width	1160 (w) x 1050 (h) GPA2M121250	1160 (w) x 1250 (h) GPA2M141250	1160 (w) x 1450 (h) GPA2M161250	1160 (w) x 1650 (h) GPA2M181250	1160 (w) x 2050 (h) GPA2M221250	1160 (w) x 2550 (h) GPA2M271250	Call out for two 1800mm Panels	Call out for two 2200mm Panels
1500 (W) System width	1410 (w) x 1050 (h) GPA2M121500	1410 (w) x 1250 (h) GPA2M141500	1410 (w) x 1450 (h) GPA2M161500	1410 (w) x 1650 (h) GPA2M181500	1410 (w) x 2050 (h) GPA2M221500	1410 (w) x 2550 (h) GPA2M271500	Call out for two 1800mm Panels	Call out for two 2200mm Panels
1750 (W) System width	1660 (w) x 1050 (h) GPA2M121750	1660 (w) x 1250 (h) GPA2M141750	1660 (w) x 1450 (h) GPA2M161750	1660 (w) x 1650 (h) GPA2M181750	1660 (w) x 2050 (h) GPA2M221750	1660 (w) x 2550 (h) GPA2M271750	Call out for two 1800mm Panels	Call out for two 2200mm Panels
2000 (W) System width	1910 (w) x 1050 (h) GPA2M122000	1910 (w) x 1250 (h) GPA2M142000	1910 (w) x 1450 (h) GPA2M162000	1910 (w) x 1650 (h) GPA2M182000	1910 (w) x 2050 (h) GPA2M222000	1910 (w) x 2550 (h) GPA2M272000	Call out for two 1800mm Panels	Call out for two 2200mm Panels

2000 Series Post Options

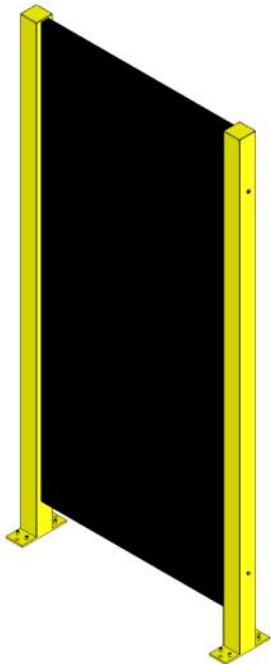
Height (mm)	1200 (H)	1400 (H)	1600 (H)	1800 (H)	2200 (H)	2700 (H)	3650 (H)	4250 (H)
STANDARD FOOT PAD	GPO2012000	GPO20140000	GPO20160000	GPO20180000	GPO20220000	GPO20270000		
LARGE PLATE FOOT PAD					GPO202200LP	GPO202700LP	GPO203600LP	GPO304250LP*

Standard Foot Pad

Large Plate Foot Pad And Gussets

*Uses 3000 Series Post with 4mm Thickness

2000 Series Sheet Metal Panels



The sheet metal panels are made of a 2mm heavy duty sheet metal, bent and welded in the four corners for a sturdy design. The panels are fastened to the posts utilizing a socket head cap screws. Custom viewing windows are an option and GSM requires the customer to provide a drawing indicating size and position. The standard viewing glass is 6mm polycarbonate.

Panel Width - Up To 1500mm
Panel Height - Up To 4250mm

Height [mm] Width [mm]	1800 (H)	2200 (H)
250 (W) System width	GPA2S180250 160 (w) x 1650 (h)	GPA2S220250 160 (w) x 2050 (h)
300 (W) System width	GPA2S180300 210 (w) x 1650 (h)	GPA2S220300 210 (w) x 2050 (h)
400 (W) System width	GPA2S180400 310 (w) x 1650 (h)	GPA2S220400 310 (w) x 2050 (h)
500 (W) System width	GPA2S180500 410 (w) x 1650 (h)	GPA2S220500 410 (w) x 2050 (h)
600 (W) System width	GPA2S180600 510 (w) x 1650 (h)	GPA2S220600 510 (w) x 2050 (h)
700 (W) System width	GPA2S180700 610 (w) x 1650 (h)	GPA2S220700 610 (w) x 2050 (h)
750 (W) System width	GPA2S180750 660 (w) x 1650 (h)	GPA2S220750 660 (w) x 2050 (h)
800 (W) System width	GPA2S180800 710 (w) x 1650 (h)	GPA2S220800 710 (w) x 2050 (h)
900 (W) System width	GPA2S180900 810 (w) x 1650 (h)	GPA2S220900 810 (w) x 2050 (h)
1000 (W) System width	GPA2S181000 910 (w) x 1650 (h)	GPA2S221000 910 (w) x 2050 (h)
1250 (W) System width	GPA2S181250 1160 (w) x 1650 (h)	GPA2S221250 1160 (w) x 2050 (h)
1500 (W) System width	GPA2S181500 1410 (w) x 1650 (h)	GPA2S221500 1410 (w) x 2050 (h)

2000 Series Weld Screen Option

WS- Welding Screen Option

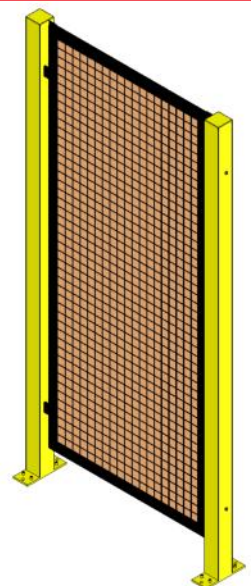
The welding screen option includes a pre-cut UV vinyl protection screen with a sheet metal frame securing the vinyl to the back side of the panel or door frame

Panel Width - Up To 1500mm
Panel Height - Up To 3650mm
Custom Sizes Consult with Factory

Standard Colors



Panel or Door P/N Example GPA2M221500WS,
GDO2M2210R01WS



2000 Series Wash Down Option

WD- Wash Down Option

The wash down option comes with all panels and post holes plugged with a flat plastic plug, stainless steel jack screws, and stainless steel shim plate for posts.

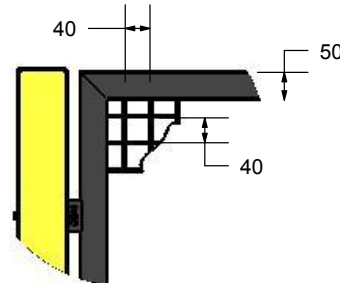
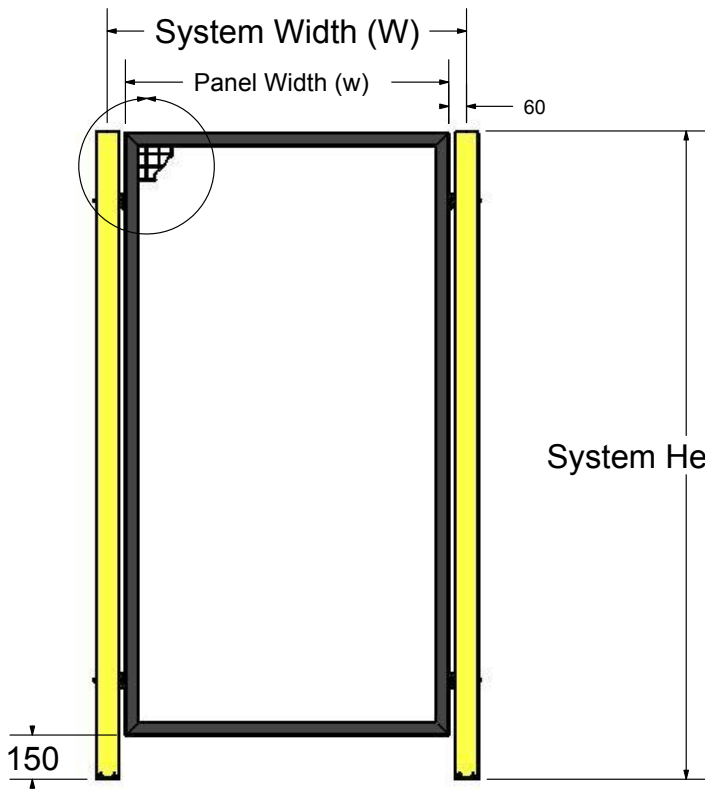
Panel or Door P/N Example GPA2M221500WD,
GDO2M2210R01WD

GSM 3000 Series

GSM's 3000 series guarding is for the customer that wants their facility or equipment to stand out from the rest. With the impressive quality and look of the roll-formed frame panels and the sturdy 80mm square posts it's sure to set you apart!

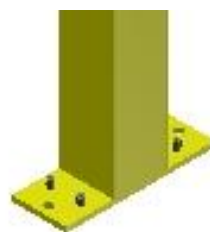
The panel is a completely roll-formed frame that allows for minimal twisting of the frame and allows for wider panels. The welded wire mesh is a 2mm wire that is welded at all junctions. Posts stand out with a 80mm square tubing with a choice between a two or four anchor foot pad. All foot pads have four threaded holes for leveling screws which are provided by GSM.

The panels and posts come with the quick assembly fittings pre-attached.

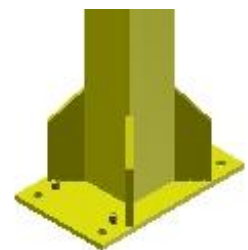


Height [mm] Width [mm]	1800 (H)	2200 (H)
300 (W) System width	180 (w) x 1650 (h) GPA3M180300	180 (w) x 2050 (h) GPA3M220300
500 (W) System width	380 (w) x 1650 (h) GPA3M180500	380 (w) x 2050 (h) GPA3M220500
750 (W) System width	630 (w) x 1650 (h) GPA3M180750	630 (w) x 2050 (h) GPA3M220750
1000 (W) System width	880 (w) x 1650 (h) GPA3M181000	880 (w) x 2050 (h) GPA3M221000
1250 (W) System width	1130 (w) x 1650 (h) GPA3M181250	1130 (w) x 2050 (h) GPA3M221250
1500 (W) System width	1380 (w) x 1650 (h) GPA3M181500	1380 (w) x 2050 (h) GPA3M221500
1750 (W) System width	1630 (w) x 1650 (h) GPA3M181750	1630 (w) x 2050 (h) GPA3M221750
2000 (W) System width	1880 (w) x 1650 (h) GPA3M182000	1880 (w) x 2050 (h) GPA3M222000
2250 (W) System width	2130 (w) x 1650 (h) GPA3M182250	2130 (w) x 2050 (h) GPA3M222250
2500 (W) System width	2380 (w) x 1650 (h) GPA3M182500	2380 (w) x 2050 (h) GPA3M222500
3000 (W) System width	2880 (w) x 1650 (h) GPA3M183000	2880 (w) x 2050 (h) GPA3M223000

Height (mm)	1800 (H)	2200 (H)
STANDARD FOOT PAD	GPO30180000	GPO30220000
LARGE PLATE FOOT PAD	GPO301800LP	GPO302200LP

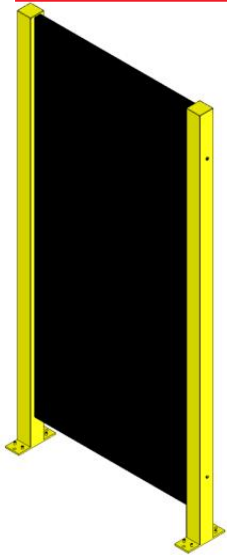


Standard Foot Pad



Large Plate Foot Pad And Gussets

3000 Series Sheet Metal Panels



The sheet metal panels are made of a 2mm heavy duty sheet metal, bent and welded in the four corners for a sturdy design. The panels are fastened to the posts utilizing a socket head cap screw. Custom viewing windows are an option and GSM requires the customer to provide a drawing indicating size and position. The standard viewing glass is 6mm polycarbonate.

Panel Width - Up To 1500mm
Panel Height - Up To 2200mm

Height [mm] Width [mm]	1800 (H)	2200 (H)
300 (W) System width	GPA3S180300 180 (w) x 1650 (h)	GPA3S220300 180 (w) x 2050 (h)
500 (W) System width	GPA3S180500 380 (w) x 1650 (h)	GPA3S220500 380 (w) x 2050 (h)
750 (W) System width	GPA3S180750 630 (w) x 1650 (h)	GPA3S220750 630 (w) x 2050 (h)
1000 (W) System width	GPA3S181000 880 (w) x 1650 (h)	GPA3S221000 880 (w) x 2050 (h)
1250 (W) System width	GPA3S181250 1130 (w) x 1650 (h)	GPA3S221250 1130 (w) x 2050 (h)
1500 (W) System width	GPA3S181500 1380 (w) x 1650 (h)	GPA3S221500 1380 (w) x 2050 (h)

3000 Series Polycarbonate Panels

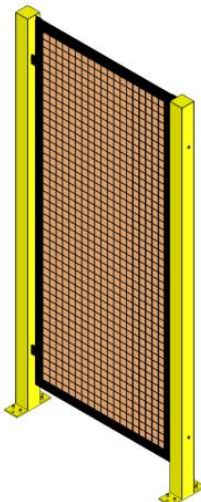


The standard polycarbonate panel utilizes a non-UV protected 4mm thick material that secures into the GSM3000 frame with metal support strips and self tapping screws. This allows the panels to be easily removed from the inside to be replaced later. UV protection and 6mm thickness can be ordered as an option. Call factory for P/N's and pricing.

Polycarbonate doors are available in door section of brochure

Height [mm] Width [mm]	2200 (H)
300 (W) System width	GPA3L220300 180 (w) x 2050 (h)
500 (W) System width	GPA3L220500 380 (w) x 2050 (h)
750 (W) System width	GPA3L220750 630 (w) x 2050 (h)
1000 (W) System width	GPA3L221000 880 (w) x 2050 (h)
1250 (W) System width	GPA3L221250 1130 (w) x 2050 (h)
1500 (W) System width	GPA3L221500 1380 (w) x 2050 (h)
1750 (W) System width	GPA3L221750 1630 (w) x 2050 (h)
2000 (W) System width	GPA3L222000 1880 (w) x 2050 (h)

3000 Series Weld Screen Option



WS- Welding Screen Option

The welding screen option includes a pre-cut UV vinyl protection screen with a sheet metal frame securing the vinyl to the back side of the panel or door frame

Panel Width - Up To 1500mm
Panel Height - Up To 2200mm
Custom Sizes Consult with Factory

Panel or Door P/N Example GPA3M221500WS,
GDO3M2210R01WS

Standard Colors



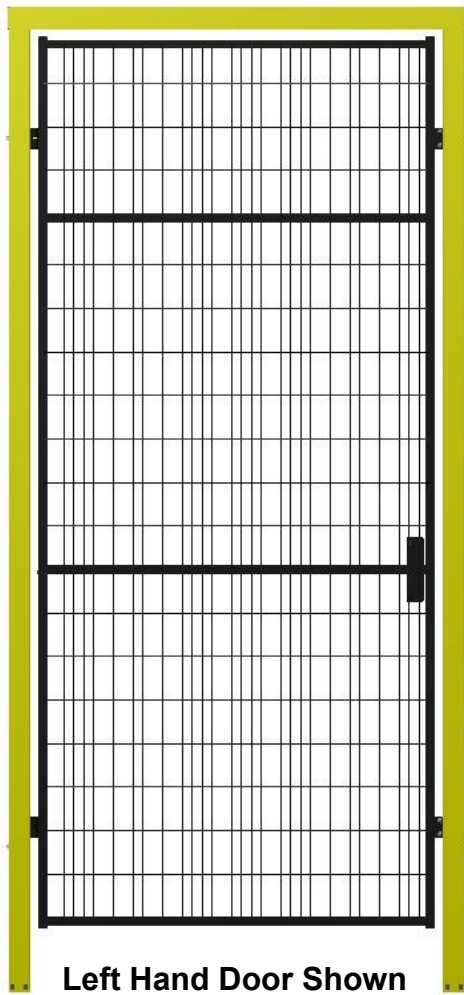
3000 Series Wash Down Option

WD- Wash Down Option

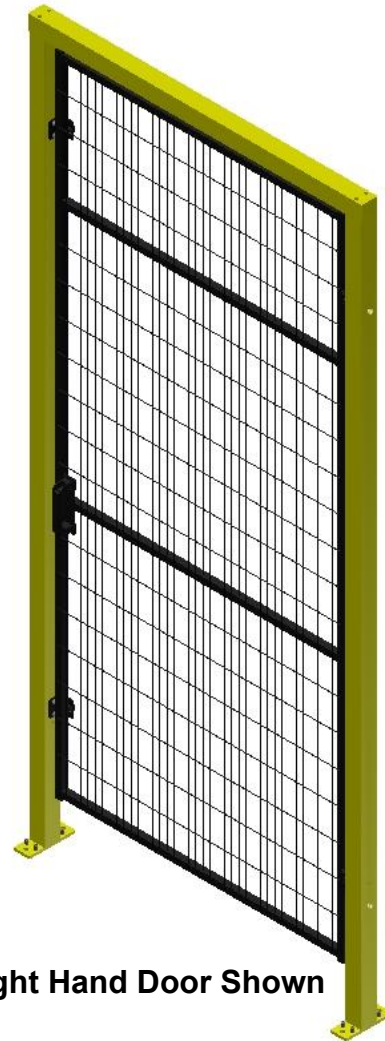
The wash down option comes with all panels and post holes plugged with a flat plastic plug, stainless steel jack screws, and stainless steel shim plate for posts.

Panel or Door P/N Example GPA3M221500WD,
GDO3M2210R01WD

GSM Single Hinged Door



Left Hand Door Shown



Right Hand Door Shown

GDO 2 M 22 12 R 01 WS

1. Style

0 Hinged

2. Series

2000

3000

3. Panel Material

Mesh

Lexan **

Sheet Metal *

4. System Height

1600mm *No Header

2200mm

2700mm

5. System Width

1000mm

1250mm

1500mm

6. Door Hand

Right

Left

7. Handle Type

01 Standard Pull Handle

02 Knob Handle without key

02K Knob Handle with key

03 AZM Interlock Handle

8. Options

CS Cantilevered Sliding Door

WS Weld Screen

WD Wash Down

PS Push Button Plate

AW AZM Pre-wired w/ Push Buttons & Connectors

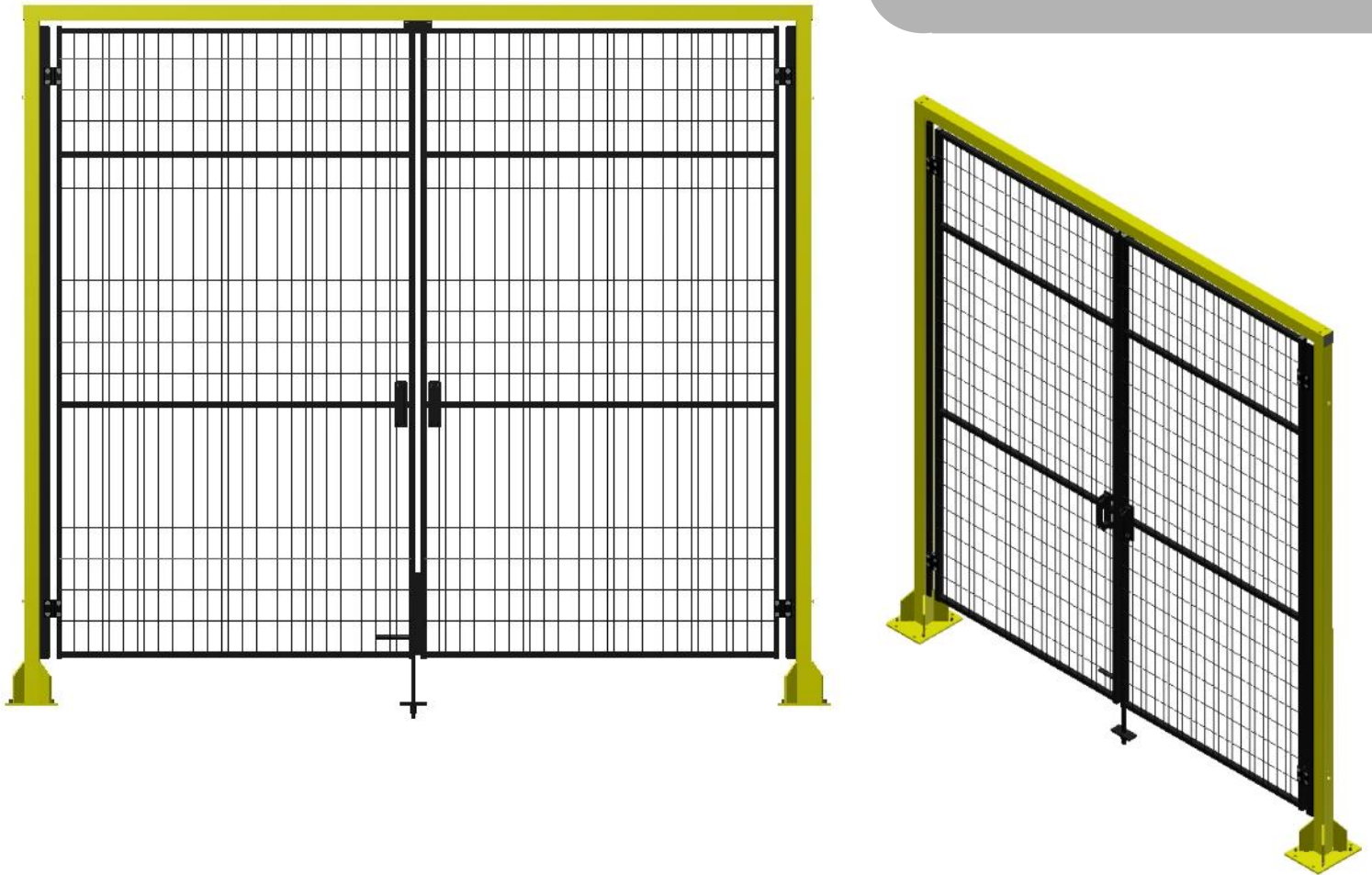
Comes Pre-Assembled !

GSM's single hinge doors are pre assembled from the factory if shipping allows. The doors come standard with cross header to stiffen the door posts. All doors have an adjustable closed door stop.

** Only Available in SH 2200mm and 3000 Series
* Only Available in SH 2200mm

Call Factory for door pricing over 2700mm

GSM Double Hinged Door



GDO 2 M 22 25 D 01 WS 8

1. Style

0 Hinged

2. Series

2000
3000

3. Panel Material

Mesh
Lexan **
Sheet Metal *

4. System Height

2200mm
2700mm

5. System Width

2000mm
2500mm
3000mm

6. Door Hand

Double

7. Handle Type

01 Standard Pull Handle
02 Knob Handle without key
02K Knob Handle with key
03 AZM Interlock Handle

8. Options

WS Weld Screen
WD Wash Down
PS Push Button Plate
AW AZM Pre-wired w/ Push Buttons & Connectors

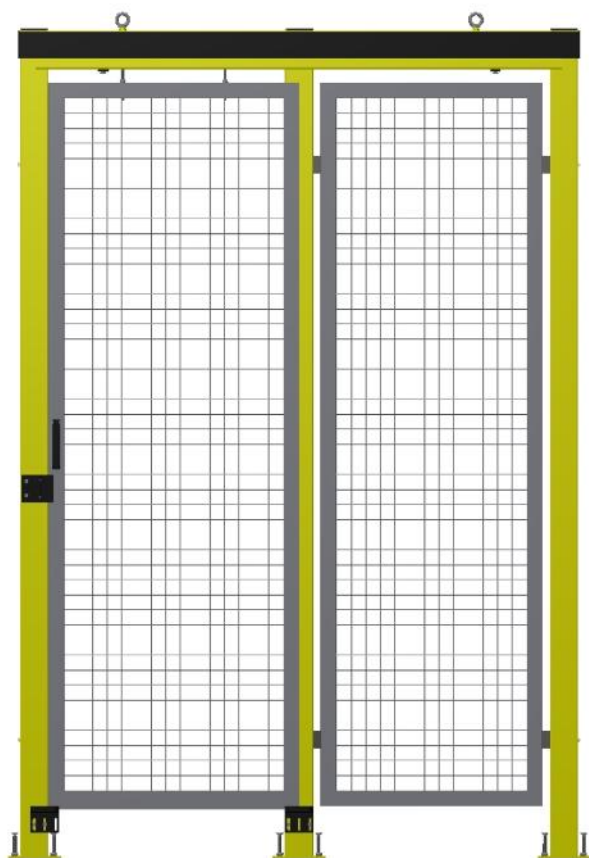
Comes Pre-Assembled !

GSM's double hinge doors are pre assembled from the factory if shipping allows. Doors come standard with a cross header to stiffen the door posts. All doors have an adjustable door stop and floor pin to secure the door panels while closed.

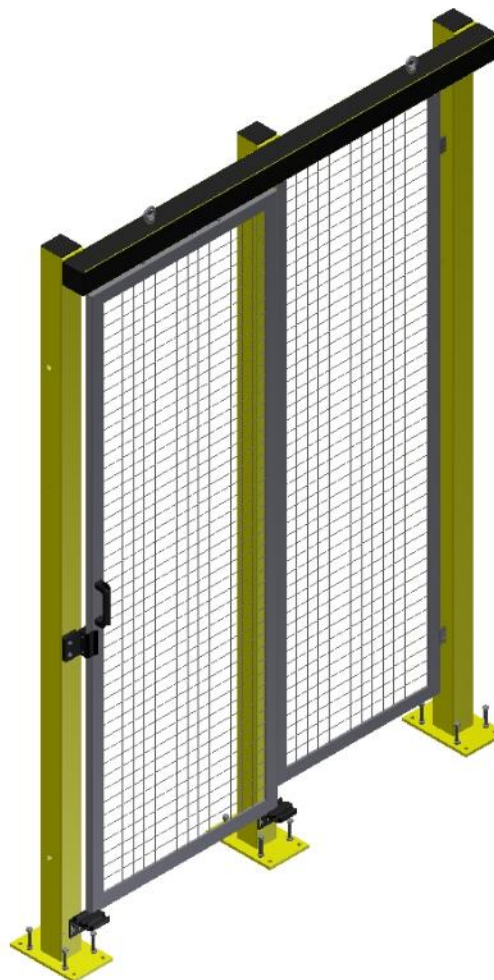
** Only Available in SH 2200mm and 3000 Series
* Only Available in SH 2200mm

Call Factory for door pricing over 2700mm

GSM Sliding Door



Right to Left Slider Shown
(Right Hand Door)



GDS 3 L 22 12 R 01 WS 8

1. Style

S Sliding

2. Series

2000
3000

3. Panel Material

Mesh
Lexan **
Sheet Metal*

4. System Height

2200mm
2700mm

5. System Width

2000mm
2500mm
3000mm

6. Door Hand

Right
Left

7. Handle Type

01 Standard Pull Handle
03 AZM Interlock Handle

8. Options

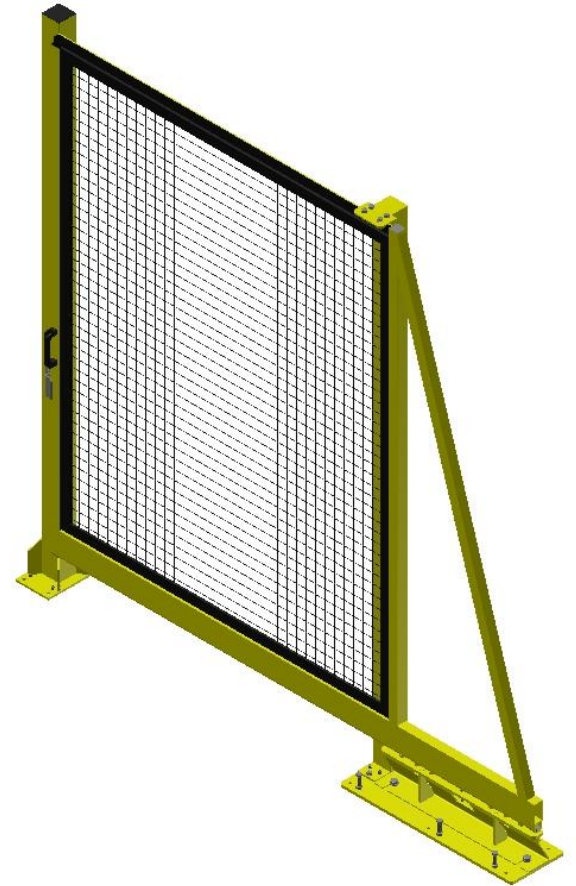
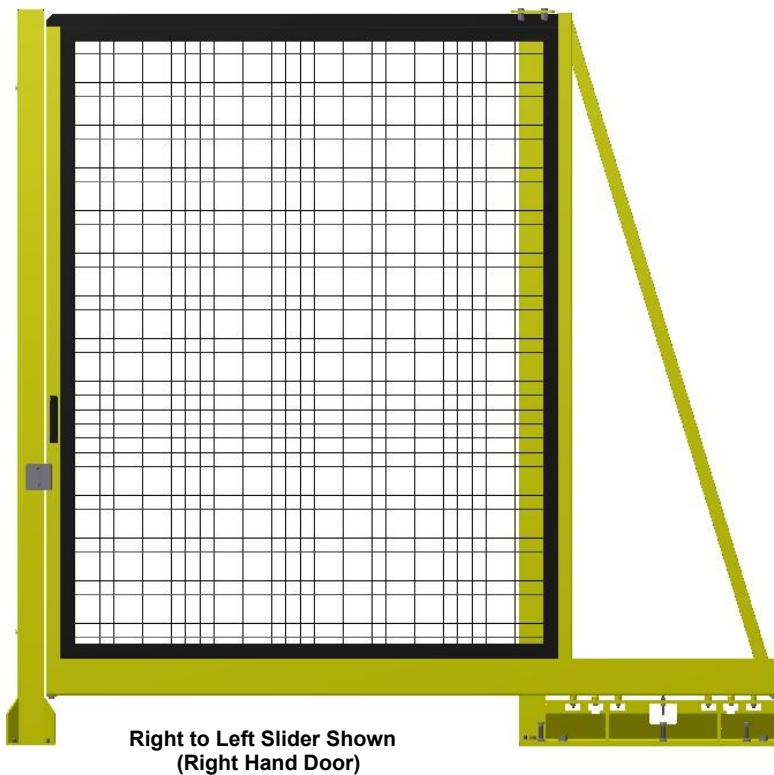
WS Weld Screen
WD Wash Down
PS Push Button Plate
AW AZM Pre-wired w/ Push Buttons & Connectors

Comes Pre-Assembled !

GSM's sliding doors are pre assembled from the factory if shipping allows. The doors come standard with a steel header track, and the door sliding apparatus utilizes industrial steel roller bearings for a smooth and reliable motion. The sliding door has an adjustable magnetic door catch system to secure the door while closed.

** Only Available in SH 2200mm and 3000 Series
* Only Available in SH 2200mm

GSM Cantilever Sliding Door



GDS 2 M 22 15 R 01 CS — 8

1 2 3 4 5 6 7 8

1. Style

S Sliding

2. Series

2000
3000

3. Panel Material

Mesh
Lexan **
Sheet Metal*

4. System Height

2200mm
2700mm

5. System Width

Single Door	Double Door
<u>1500mm</u>	<u>3000mm</u>
<u>1750mm</u>	<u>4000mm</u>
<u>2000mm</u>	<u>5000mm</u>
<u>3000mm</u>	<u>6000mm</u>

6. Door Hand

Right
Left
Double

7. Handle Type

01 Standard Pull Handle
03 AZM Interlock Handle

8. Options

CS Cantilever
WS Weld Screen
WD Wash Down
PS Push Button Plate
AW AZM Pre-wired w/ Push Buttons & Connectors

NO HEADER!

GSM's cantilevered sliding doors are a robust solution for applications where you cannot have a header support structure. The door sliding apparatus utilizes 26 industrial steel roller bearings mounted on the base plate for a smooth and reliable motion. GSM offers many different configurations including cascading doors for restricted space applications. The sliding door has an adjustable magnetic door catch system to secure the door while closed. This door cannot be pre-assembled at the factory

****** Only Available in SH 2200mm and 3000 Series
***** Only Available in SH 2200mm

GSM Door Options

Standard Handle Options



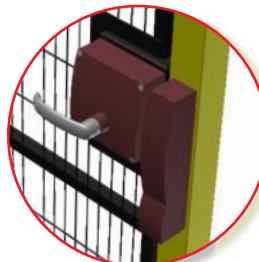
01 Standard Door Handle

The 01 handle is a basic high strength plastic handle. The door relies on industrial magnets for the positive stop and holding the door shut. This handle should be used with another mechanical interlock device.



02 Latch Knob Handle With or Without Keyed Entry

The 02 handle has a knob handle on the outside of the door and a lever handle on the inside that will open the door even if the door is locked. The handle system can be ordered with or without a keyed lock.



03 Schmersal Interlock Door Handle

The 03 handle is a dual redundant solenoid Interlock handle system with the emergency release on the inside. The interlock has a door closed sensor and a tongue sensor to indicate that the door is latched.

Power To Unlock is Standard
Option for Power to Lock Available
(P/N GHWELAZSOPUEX)

AW Option for the 03 AZM



Wired To Multi-Pin
Connector

The AW option includes

- Pre-wired Schmersal AZM Interlock
- Pre-wired Integrated Safety Control Pendant (push buttons as described)
- Pre-wired 24pin Harting plug mounted to back side of door post
- Female side of Harting plug without cable

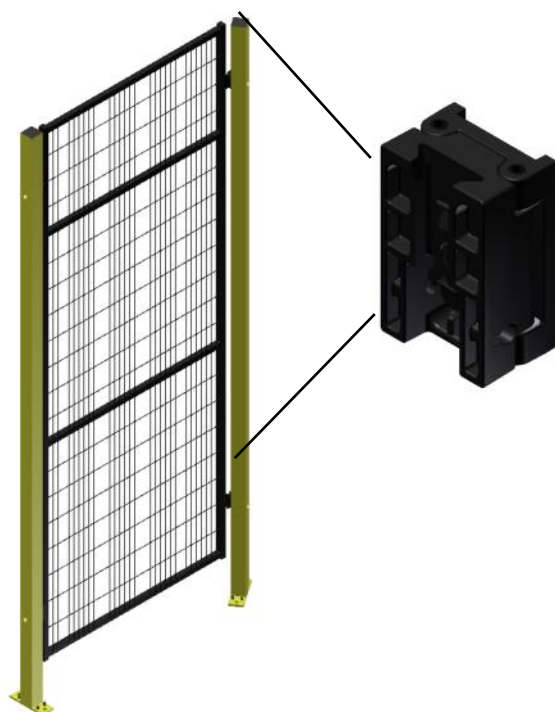


- Request To Enter
- Trap Key
- Reset
- E-Stop

PRE-WIRED CONNECTOR FOR HARTING PLUG

GELWHPODODH030	30ft Cable With Female Harting 24 Leads
GELWHPODODH060	60ft Cable With Female Harting 24 Leads
GELWHPODODH120	120ft Cable With Female Harting 24 Leads

Hardware



Angled Quick Assembly Fitting (Fittings must be ordered separately from panels)

P/N GHWBL001

Straight Quick Assembly Fitting (Fittings are pre-assembled to the panels)



GHWBL005L	Standard Straight Assembly Fitting Left
GHWBL005R	Standard Straight Assembly Fitting Right

Special M6 Shoulder Bolt to Mate Assembly Fitting To Post (Qty 1 per Pack)

P/N GHWSC001



Other Hardware	
GHWBO0001	3/8"x 3" Anchor Bolts (Qty 1 per Pack)
GHWSM200	GSM 2000 Post Shim Plate
GHWSM300	GSM 3000 Post Shim Plate

GSM Panel Unlock Keys (6 per Pack)

P/N GHWKEYSET

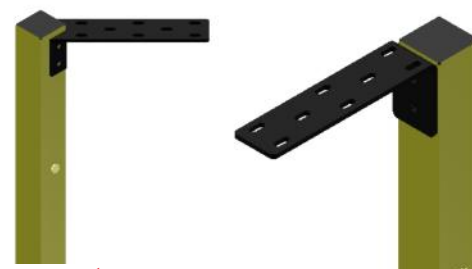
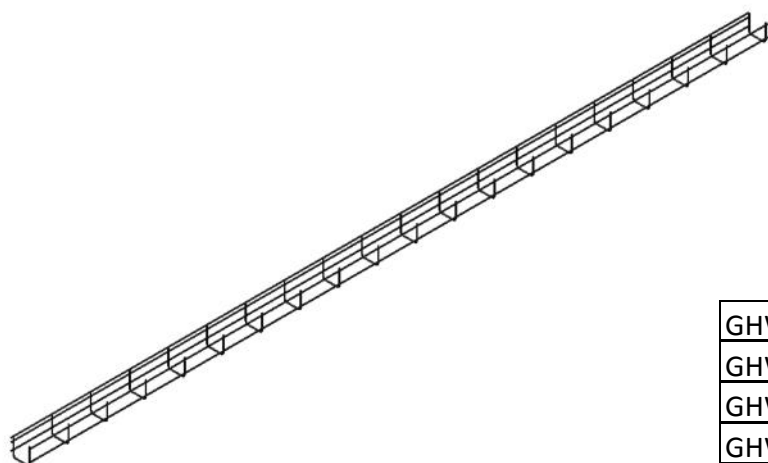


Wire Management

Cable Channel

The wire management comes in a 45mm x 45mm design and is mounted to the posts. Only sold in 2M lengths (hardware not included)

GHWCC002	2M 45mmx45mm Cable Channel
----------	----------------------------



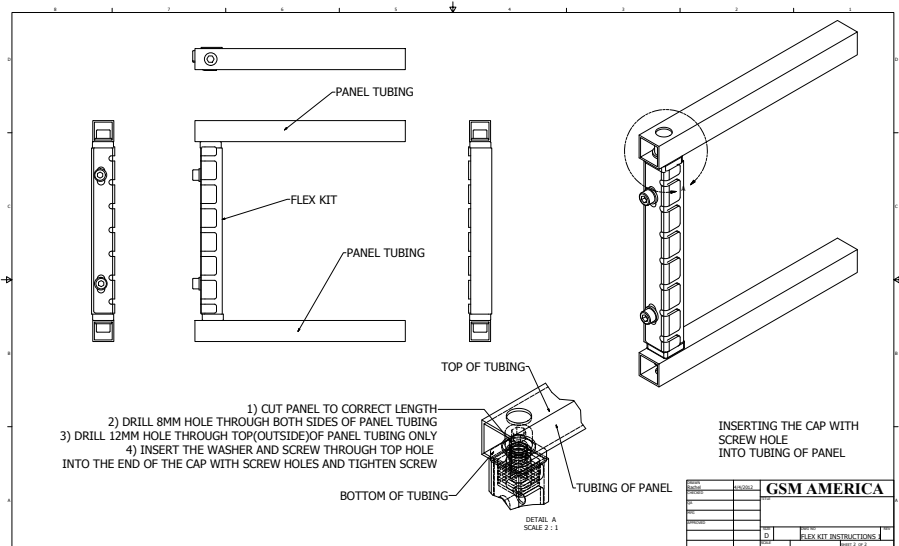
Cable Tray Support

The cable tray support can be used for both the GSM 2000 and 3000 series. The support deck is 185mmX50mm. GSM offers both line post and corner post supports (hardware for post included)

GHWCCCH03000	Line Post 90° No Post Hole Prep
GHWCCCH03400	Corner Post 45° No Post Hole Prep
GHWCCCH030WH	Line Post 90° With Post Hole Prep
GHWCCCH034WH	Corner Post 45° With Post Hole Prep

Flexibility

GSM Flex Kits - GSM offers the flexibility that you require in the field. The flex kits come in width and height adjustment. The kits only require basic tools to modify the panels in the field

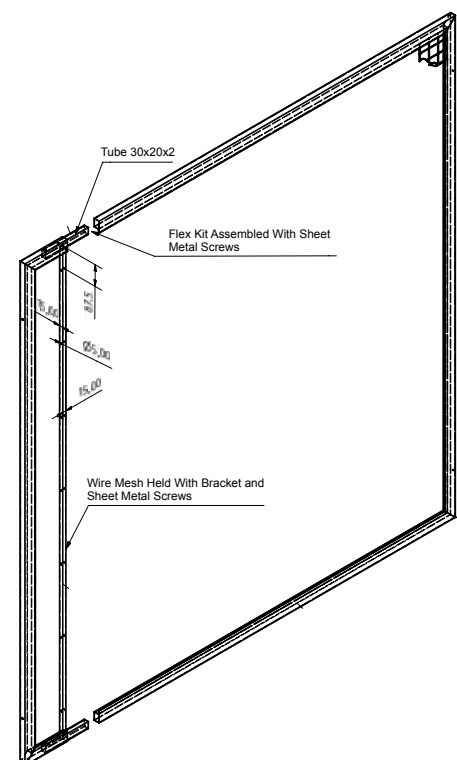


GSM 2000 Series

2000 SERIES FLEX KIT FOR WIDTH ADJUSTMENT	
GPA2M14FLEX	PANEL KIT,GSM 2000,SYSTEM HEIGHT 1400MM,WIDTH ADJUSTMENT
GPA2M16FLEX	PANEL KIT,GSM 2000,SYSTEM HEIGHT 1600MM,WIDTH ADJUSTMENT
GPA2M18FLEX	PANEL KIT,GSM 2000,SYSTEM HEIGHT 1800MM,WIDTH ADJUSTMENT
GPA2M22FLEX	PANEL KIT,GSM 2000,SYSTEM HEIGHT 2200MM,WIDTH ADJUSTMENT
GPA2M27FLEX	PANEL KIT,GSM 2000,SYSTEM HEIGHT 2700MM,WIDTH ADJUSTMENT
2000 SERIES FLEX KIT FOR HEIGHT ADJUSTMENT	
GPA2M025FLEX	PANEL KIT,GSM 2000,WIDTH 250MM,HEIGHT ADJUSTMENT
GPA2M03FLEX	PANEL KIT,GSM 2000,WIDTH 300MM,HEIGHT ADJUSTMENT
GPA2M04FLEX	PANEL KIT,GSM 2000,WIDTH 400MM,HEIGHT ADJUSTMENT
GPA2M05FLEX	PANEL KIT,GSM 2000,WIDTH 500MM,HEIGHT ADJUSTMENT
GPA2M06FLEX	PANEL KIT,GSM 2000,WIDTH 600MM,HEIGHT ADJUSTMENT
GPA2M075FLEX	PANEL KIT,GSM 2000,WIDTH 750MM,HEIGHT ADJUSTMENT
GPA2M07FLEX	PANEL KIT,GSM 2000,WIDTH 700MM,HEIGHT ADJUSTMENT
GPA2M08FLEX	PANEL KIT,GSM 2000,WIDTH 800MM,HEIGHT ADJUSTMENT
GPA2M09FLEX	PANEL KIT,GSM 2000,WIDTH 900MM,HEIGHT ADJUSTMENT
GPA2M10FLEX	PANEL KIT,GSM 2000,WIDTH 1000MM,HEIGHT ADJUSTMENT
GPA2M12FLEX	PANEL KIT,GSM 2000,WIDTH 1250MM,HEIGHT ADJUSTMENT
GPA2M15FLEX	PANEL KIT,GSM 2000,WIDTH 1500MM,HEIGHT ADJUSTMENT
GPA2M17FLEX	PANEL KIT,GSM 2000,WIDTH 1750MM,HEIGHT ADJUSTMENT
GPA2M20FLEX	PANEL KIT,GSM 2000,WIDTH 2000MM,HEIGHT ADJUSTMENT

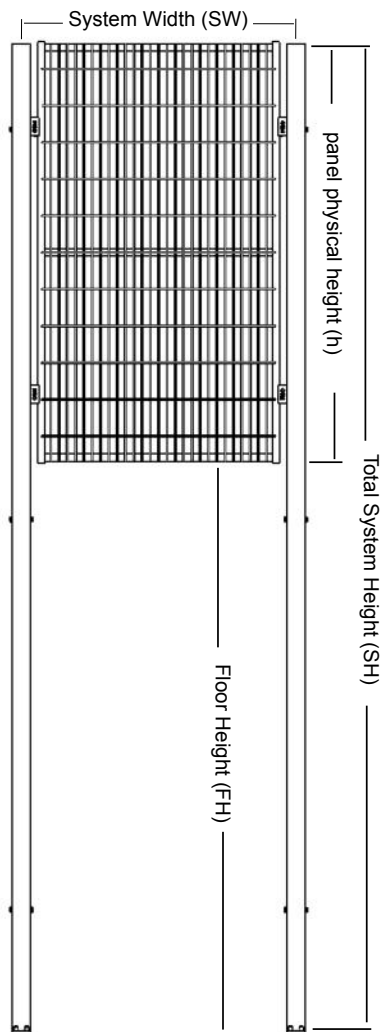
GSM 3000 Series

3000 SERIES FLEX KIT FOR WIDTH ADJUSTMENT	
GPA3M18FLEX	PANEL KIT,GSM 3000,SYSTEM HEIGHT 1800MM,WIDTH ADJUST
GPA3M22FLEX	PANEL KIT,GSM 3000,SYSTEM HEIGHT 2200MM,WIDTH ADJUST
3000 SERIES FLEX KIT FOR HEIGHT ADJUSTMENT	
GPA3M03FLEX	PANEL KIT,GSM 3000,WIDTH 300MM,HEIGHT ADJUSTMENT
GPA3M05FLEX	PANEL KIT,GSM 3000,WIDTH 500MM,HEIGHT ADJUSTMENT
GPA3M07FLEX	PANEL KIT,GSM 3000,WIDTH 750MM,HEIGHT ADJUSTMENT
GPA3M10FLEX	PANEL KIT,GSM 3000,WIDTH 1000MM,HEIGHT ADJUSTMENT
GPA3M12FLEX	PANEL KIT,GSM 3000,WIDTH 1250MM,HEIGHT ADJUSTMENT
GPA3M15FLEX	PANEL KIT,GSM 3000,WIDTH 1500MM,HEIGHT ADJUSTMENT
GPA3M17FLEX	PANEL KIT,GSM 3000,WIDTH 1750MM,HEIGHT ADJUSTMENT
GPA3M20FLEX	PANEL KIT,GSM 3000,WIDTH 2000MM,HEIGHT ADJUSTMENT

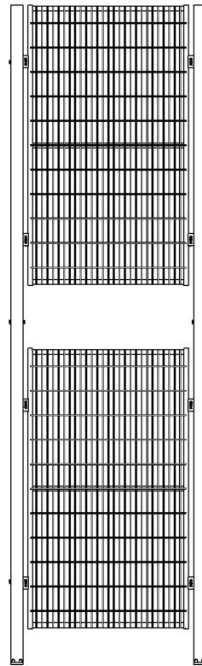


Custom Panels & Posts Terminology

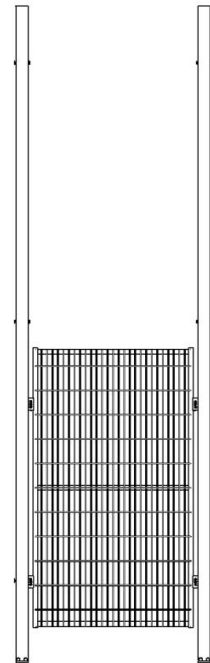
GSM has a wide array of options to tackle even the most complex of your guarding needs. If your project needs customization please consult with the factory for assistance.



Example 2



Example 3

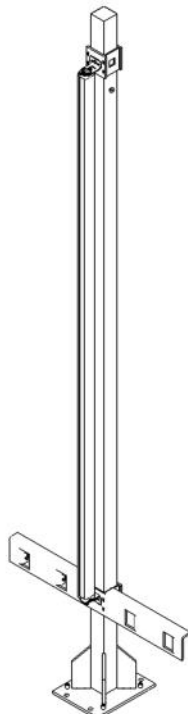
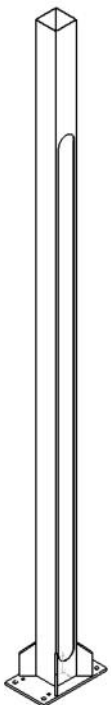


Measurements Needed For Custom Panels

System Width (SW)	Center to center post dimension
Physical Panel Height (h)	
Total System Height (SH)	Post and panel system height
Floor Height (FH)	Floor to bottom of panel measurement (In example 2&3 FH=150mm Sweep)

Light Curtain Mounts

GSM offers a broad range of different light curtain mounts depending on specific applications. Please refer to the Light Curtain Mount Brochure for more information.





Guarding Safety Motion

GSM America
260 Durand Ave
High Point, NC 27261
T; +1 336 886 1847
F; +1 336 884 0121
E; info@gsmotion.com

GSM GMBH
Raiffeisenstrasse 28
D-33175 Bad Lippspringe
Germany
T: +(49) 0 52 52-97 59-0

Represented By:

